



Technical modifications and updating of the spare parts catalogue diamond 85 – 100 – 100s



Here below you will find the most important changes made during the last year. We ask you to carefully read all the information, necessary for your future orders.

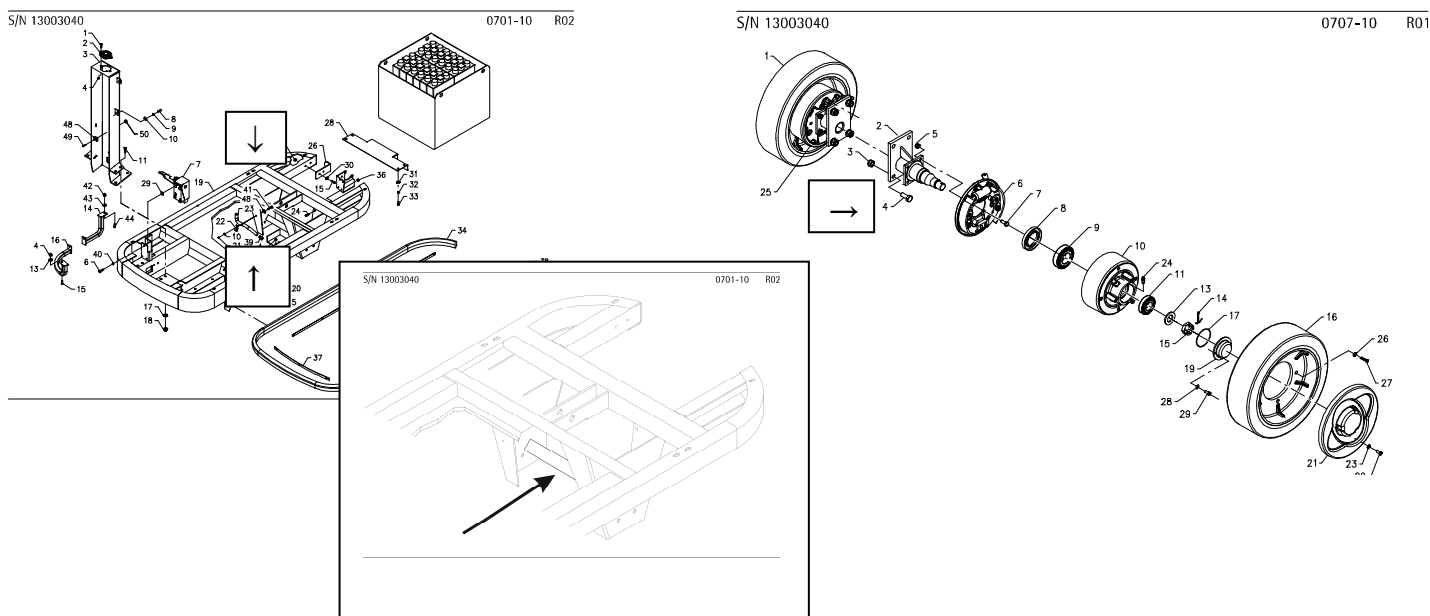
→ Starting from serial number:

13003040 dated 09/09/13 (tables 0701-10 R02 and 0707-10 R01 for diamond 85-100)

13003820 dated 20/09/13 (tables S0701-10 R02, S0706-40 R01 and S0707-10 R01 for diamond 100s)

Owing to hits of the rear wheels against obstacles we have verified some cases where the frame was deformed in the fixing area of the axle shafts. We intervene strengthening it with a bar that connects between them the supports where the axle shafts are fixed and modifying the thickness of these supports. For this reason it is necessary to replace the screws that fix the components onto these parts of the frame. The frame is interchangeable with the previous one.

In table S0701-10 R02 we have moreover added pos. 64 for the frame.



→ Starting from serial number: 13003939 dated 27/11/13 (tables 0705-10 and S0705-10)
We have replaced the squeegee pressure spring (pos. 10) by strengthening it.

→ Starting from serial number:
14001120 dated 06/03/14 (tables 0705-10 and 0705-20 for diamond 85-100)
14000088 dated 14/01/14 (tables S0705-10 and S0705-20 for diamond 100s)
We have further on strengthened the squeegee pressure spring (pos. 10). The new part number is:
47220210 traction spring 26x4,2x78.

In addition, also the geared motor squeegee lifting (pos. 8) has been replaced with a similar one of 80W. Both the new spring and the geared motor are interchangeable with the previous ones, but as they have different characteristics, a new part number has been given. The geared motor can be assembled also on already produced machines, while the spring can be assembled if also the geared motor is replaced.

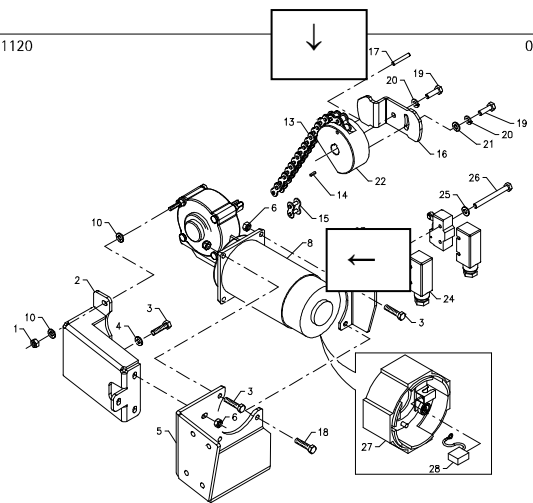
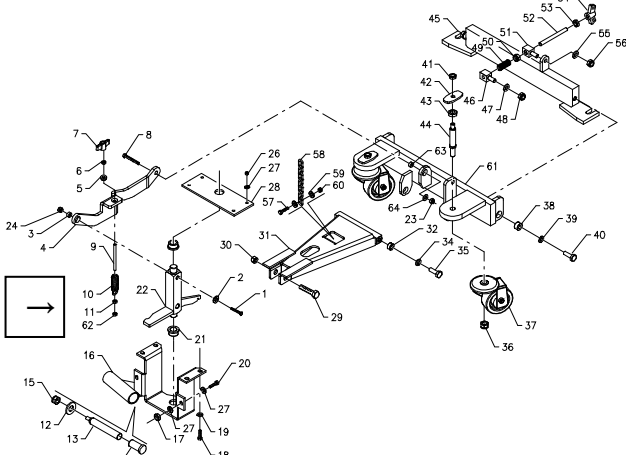
→ Starting from serial number: 13003820 dated 20/09/13 (tables 0705-20 and S0705-20)
The profile of the cam (pos. 16) has been modified to increase the length and the contact force.
We have verified some cases where because of inertia of the geared motor the micro switch lever exceeded the cam. To avoid this inconvenience, the supporting ray of the profile has been increased and the outgoing bevel has been taken off to increase the contact zone.
The modified cam is interchangeable with the previous one.

S/N 14001120

0705-10 R02

S/N 14001120

0705-20 R02



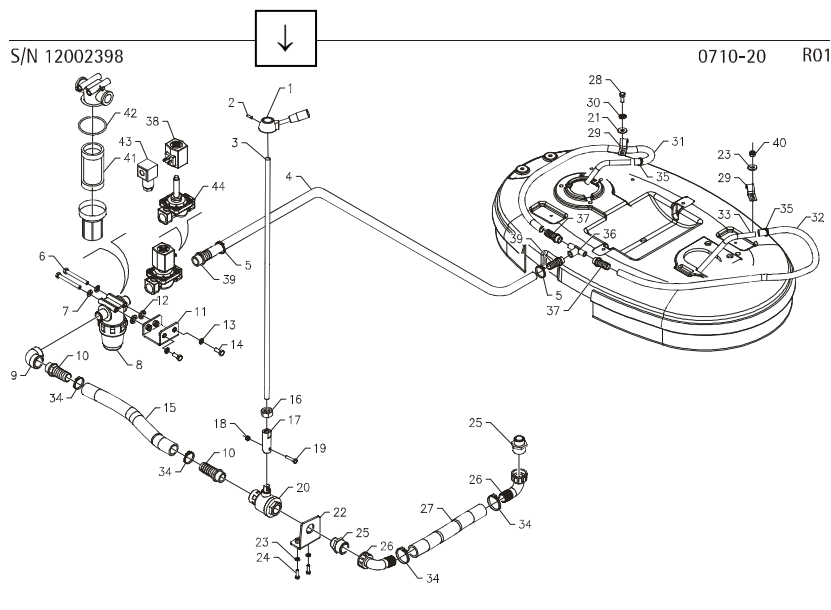
→ Starting from serial number:

13003937 dated 21/11/13 (table 0710-20 for diamond 85-100, pos. 1)

13004909 dated 12/12/13 (table S0710-20 for diamond 100s, pos. 35)

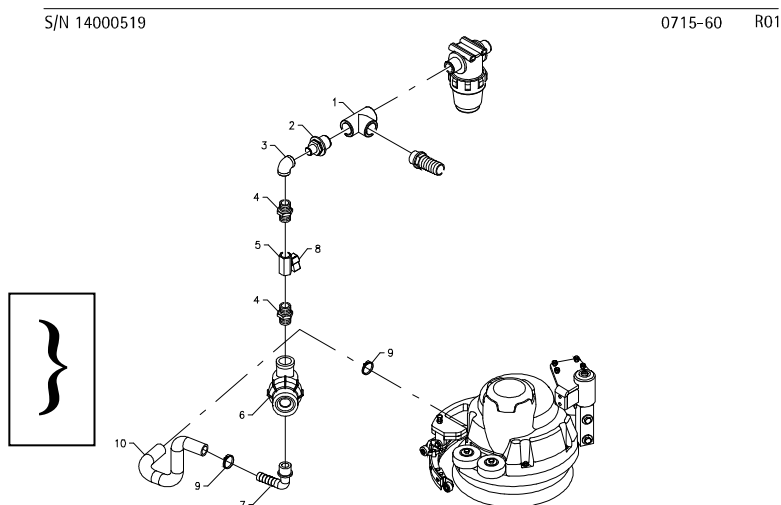
The control lever of the solution valve is too long and risks the solution valve breakage. For this reason we have shortened the lever. The new lever is interchangeable with the previous one and can be assembled also on the previous machines. The part number remains unchanged (20710140).

3



→ Starting from serial number: 14000519 dated 20/02/14 – (table 0715-60 R01 for diamond 100)

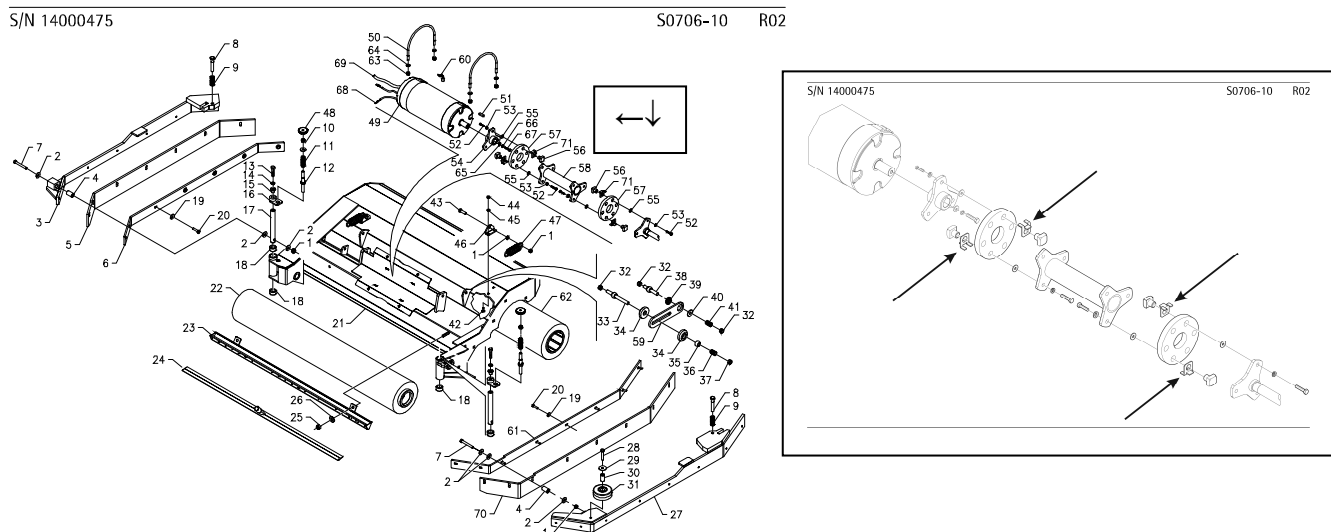
In the side brush (optional) we add a filter 3/8" before the solenoid valve to avoid eventual obstructions.



→ Starting from serial number:

14000475 dated 22/01/14 – table S0706-10 R02, pos. 71 for diamond 100s

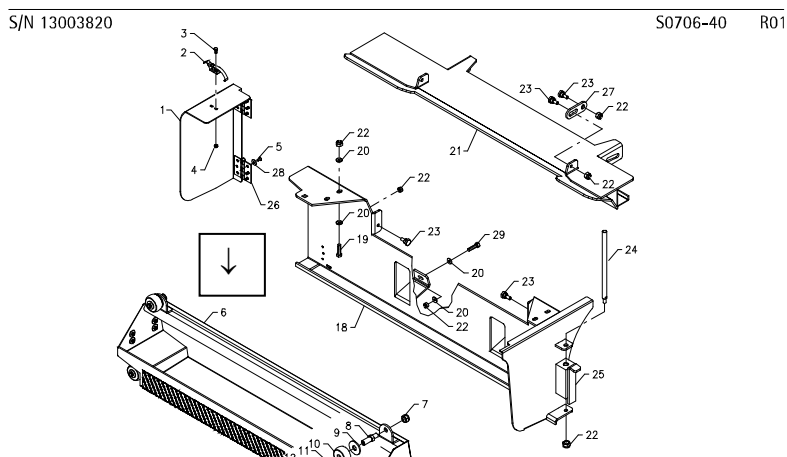
When the base is assembled on the machine it becomes difficult to take off the motor assembly, the flange, the extension tube and its flexible couplings. It is necessary to assemble a stop plaque (20706730) for each bushing with square head (pos. 56). The modification is applicable also on the produced machines.



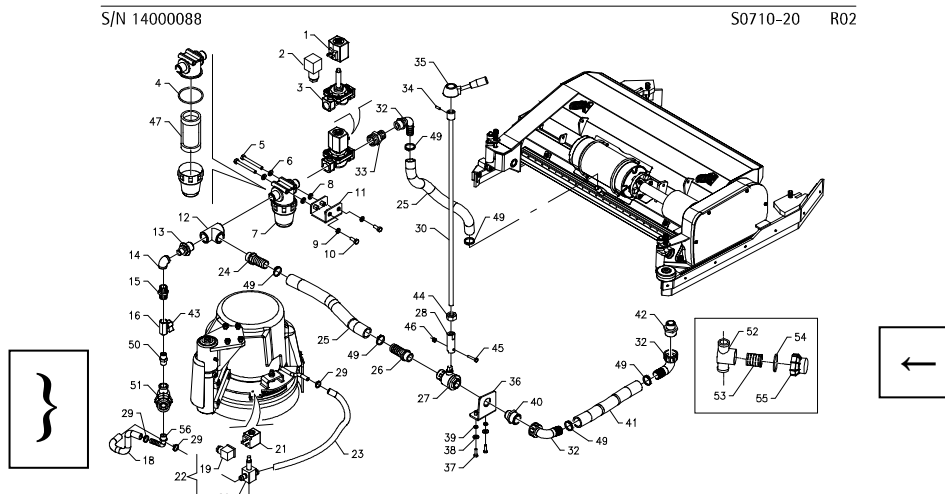
→ Starting from serial number:

13003820 dated 20/09/13 – table S0706-40 R01 for diamond 100s

The bottom of the collection box presents some slots so to pour the water withholding the solid parts picked up. Since we have noticed that these are insufficient, the bottom has been replaced with a perforated sheet metal. The part number of the collection box remains unchanged and it is interchangeable with the previous one.

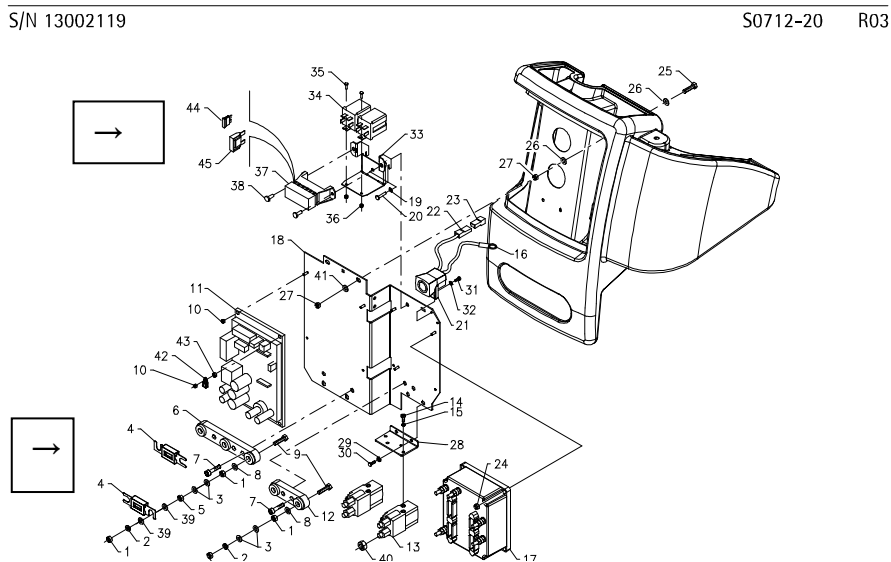


→ Starting from serial number: 14000088 dated 14/01/14 – (table S0710-20 R02 for diamond 100s)
 We add a filter 3/8" before the solenoid valve to avoid eventual obstructions.

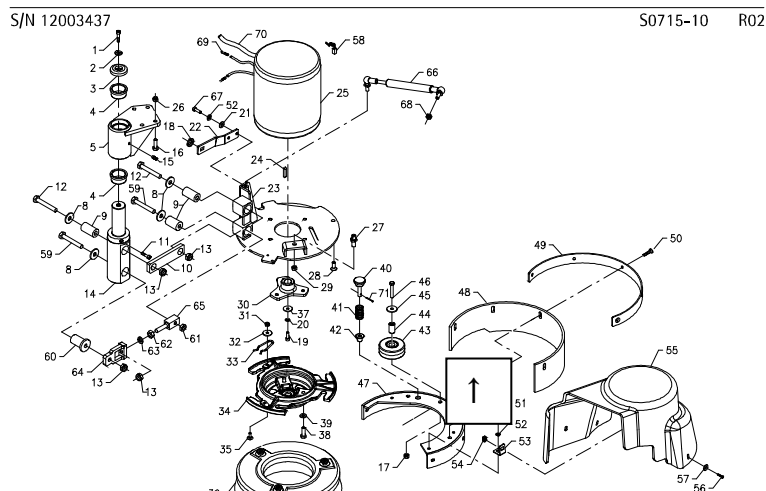


Ref. table S0712-20 R03 – diamond 100s

We have corrected the drawing adding positions 44 and 45. Furthermore we have corrected part number and description of the fuse pos. 4.



→ Starting from serial number: 1400475 dated 22/01/14 – (table S0715-10 R02 for diamond 100s)
The profile of the splash guard side brush (pos. 48) has been modified making a clearance in the front part to permit the solid dirt to pass and to be picked up by the brush.
In addition here enclosed the technical manual T071501 for the correct assembly of the splash guard.



The updated tables are available on request.

At your disposal for additional information, we remain

with best regards
ADIATEK SRL
Technical dept.

Amore